

KILLARNEY MOUNTAIN LODGE  
AND CONFERENCE CENTRE



GET OUT OF THE **BORED** ROOM!

WHERE IT ALL COMES TOGETHER  
**CORPORATE PACKAGES**



# ADVENTURE RESORT CONFERENCE CENTRE BEST OF BOTH

You want more than just a meeting. You want your people to create something special. Something they can take with them. Something that lasts. At Killarney Mountain

Lodge and Conference Centre, we provide a completely unique combination of resort amenities, state-of-the-art conference facilities, multiple meeting room

options and breakout rooms, all set against the backdrop of some of Georgian Bay's most inspiring wilderness. We offer guests comfortable lodge accommodations

overlooking Killarney Channel, several dining options, a heated pool, a games room, watercraft, a full service marina and boundless activities and wilderness excursions.







## VERY ACCOMMODATING

When it comes to a good night's sleep at Killarney Mountain Lodge and Conference Centre, we have several cozy choices

to offer your guests, all with plush linens, bed coverings and down pillows. Choose from our breezy Cabin Suites,

our exclusive Executive Suites or our sumptuous Covered Portage King or Queen Suites overlooking Killarney Channel.



Covered Portage



Killarney Suites



Pilot House





## MAKE YOUR MEETING

*Over 25,000 square feet of meeting and reception space.*

However you want to hold your meeting, we have many options to make it work. Start with a large group and then breakout into

smaller meetings. Or begin with an opening reception and then into a meeting configuration. We have two facilities to choose

from, Killarney Mountain Lodge or our Conference Centre, also known as Canada House.



KILLARNEY MOUNTAIN LODGE  
AND CONFERENCE CENTRE







## GRANITE RIDGE

Meeting Venue



Our largest room, features 40 ft vaulted log truss ceilings and stone fireplace.

<b>Capacity</b>	<b>250</b>
Sq. Ft.	4260
Banquet	250
Classroom	175
U Shape	75
Hallow Square	100
Reception	250
Minimum	100



## SILVER PEAKS

Meeting Venue



Our Steak house, vaulted log beam ceilings, stone fireplace.

<b>Capacity</b>	<b>100</b>
Sq. Ft.	2350
Banquet	100
Classroom	
U Shape	
Hallow Square	
Reception	100
Minimum	80



## CAPTAIN'S QUARTERS

Meeting & Private Dining Venue



The Captain's Quarters is a 12 person private meeting and dining room. A very select collection of wines, thoughtfully crafted culinary experiences and your own private view out to Killarney Channel.

<b>Capacity</b>	<b>12</b>
Sq. Ft.	240
Banquet	
Classroom	
U Shape	
Hallow Square	
Reception	
Minimum	10



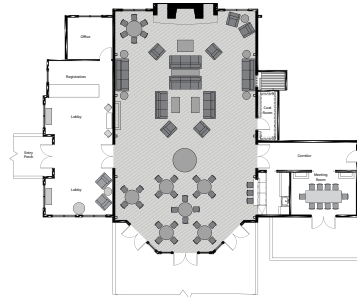
## GREAT ROOM

Meeting Venue



Log walls, vaulted wood beam truss ceiling, large fireplace.

<b>Capacity</b>	<b>110</b>
Sq. Ft.	1800
Banquet	80
Classroom	150
U Shape	30
Hallow Square	40
Reception	110
Minimum	40







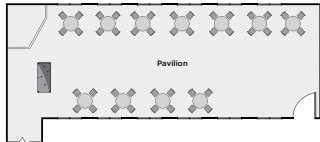
PAVILION



Meeting and Reception Venue

Our historic meeting room, surrounded by windows, vintage feel.

Capacity	200
Sq. Ft.	2464
Banquet	200
Classroom	250
U Shape	
Hallow Square	
Reception	
Minimum	40



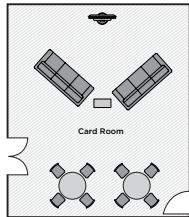
CARD ROOM



Meeting Venue

Have an intimate gathering or focus group with a big screen TV for presentations.

Set Up	Capacity
Banquet	35
Classroom	28
Theatre	56
Boardroom	16
Hollow Square	24
Reception	40



GROUP OF SEVEN



Breakout Room

Classroom style setup with large monitor for presentations.

Capacity	50
Sq. Ft.	780
Banquet	
Classroom	50
U Shape	
Hallow Square	
Reception	
Minimum	25



HOLE IN THE WALL



Breakout Room

Large boardroom with dual monitors for simultaneous presentations.

Capacity	32
Sq. Ft.	525
Banquet	
Classroom	
U Shape	
Hallow Square	
Reception	
Minimum	



BUNGY'S BUNKER



Breakout Room

Classroom style setup with large monitor for presentations.

Capacity	50
Sq. Ft.	1020
Banquet	
Classroom	50
U Shape	
Hallow Square	
Reception	
Minimum	25



TIMBER ROOM



Breakout Room

Small board room for up to 8 with large monitor for presentations.

Capacity	8
Sq. Ft.	315
Banquet	
Classroom	
U Shape	
Hallow Square	
Reception	
Minimum	







## FOXES DEN

Breakout Room



Classroom style setup with large monitor for presentations.

<b>Capacity</b>	<b>24</b>
Sq. Ft.	475
<b>Banquet</b>	
Classroom	24
U Shape	
Hallow Square	
Reception	
Minimum	



## LIGHTHOUSE LAIR

Breakout Room



Classroom style setup with large monitor for presentations.

<b>Capacity</b>	<b>30</b>
Sq. Ft.	425
<b>Banquet</b>	
Classroom	30
U Shape	
Hallow Square	
Reception	
Minimum	



## SQUARE DANCE

Breakout Room



Small board room for up to 8 with large monitor for presentations.

<b>Capacity</b>	<b>8</b>
Sq. Ft.	315
<b>Banquet</b>	
Classroom	
U Shape	
Hallow Square	
Reception	
Minimum	



## HARBOUR ROOM

Reception Venue



Large reception space with soft seating, vaulting ceiling and unique atmosphere.

<b>Capacity</b>	<b>100</b>
Sq. Ft.	882
<b>Banquet</b>	
Classroom	
U Shape	
Hallow Square	
Reception	100
Minimum	



## WATER'S EDGE TERRACE

Reception Venue



Large outdoor patio, ideal for cocktail / canape receptions.

<b>Capacity</b>	<b>300</b>
Sq. Ft.	4200
<b>Banquet</b>	
Classroom	
U Shape	
Hallow Square	
Reception	
Minimum	



## LANDSDOWNE HALL

Reception Venue



Common room for catered breaks and receptions.

<b>Capacity</b>	<b>150</b>
Sq. Ft.	2800
<b>Banquet</b>	
Classroom	
U Shape	
Hallow Square	
Reception	
Minimum	





# WINE & DINE TO YOUR GROUP'S DELIGHT

Inside, outside, upstairs and downstairs - *it's all good*

*Working Lunch and Dinners. Choose from our casual or more formal menus and we will bring your meals right to your meeting.*



## Ranch House Dining

Situated in Killarney's Conference Centre: Canada House, The Ranch House offers some of Killarney's best in expertly-crafted dishes and wine selections, all to be enjoyed with gorgeous views overlooking the beautiful Georgian Bay and Killarney Channel.

## Great Room Dining

The Great Room and bar feature leather seating areas and multiple dining configurations. With its enormous granite fireplace and log clad walls as a spectacular backdrop, your guests will enjoy an authentic lodge dining experience.

## Fish Fry BBQ

Fish and chips, anyone? How about a traditional Killarney fish fry on the rocks overlooking the Killarney channel? Your guests gather in the open air and are served delicious freshly-caught fish, crispy hand-cut fries and homemade slaw.



# KILLARNEY MOUNTAIN LODGE RESORT AMENITIES

Recent upgrades and additions to Killarney Mountain Lodge provide guests with multiple dining options, a heated pool, a games room, watercraft, a full service marina and boundless activities and wilderness excursions.

All overnight and corporate guests are invited to take advantage of all we have to offer.

## Pines Room Fitness Centre

We have created a world-class workout facility right in the heart of Canada House, our conference centre. The Pines Room Fitness Centre provides all the amenities needed for any level of work out. Separate men's and women's change rooms are provided.





# HAVE AN “OUT OF OFFICE EXPERIENCE!”

*This is your chance to take your experience to a completely new level*

The flexible nature of Killarney Mountain Lodge ensures that your company’s experience will be entirely your own. Customize your stay to fulfill event objectives. Team building activities like wilderness excursions, boat cruises and targeted games can boost positivity and inspire synergy.



# TAKE YOUR TEAM TO THE NEXT LEVEL



*Here are a few of the many different activities that your group can take advantage of while at Killarney Mountain Lodge and Conference Centre.*

## **Wine Tasting**

Sample some of the finest wine that our collection has to offer as our experienced wine steward walks you through an assortment of old world or new world wines complete with palate cleansing snacks.

**Duration: 1.5 Hours**

## **Guided Hike to the Lighthouse**

Beginning at Killarney Mountain Lodge, the Lighthouse Hike takes you through a mixed forest of pine, red maple and the occasional spruce, over pink granite rocks and along the rugged Georgian Bay coastline. Along the way, your guide will teach you about the natural and local history of the area. Groups will also have the opportunity to enjoy all the sights, smells, and even tastes of the area with their guide.

**Duration: 2-3 Hours**

## **Stormy Night**

This sailing experience is designed to bring your employees closer together by developing working relationships they can use in the corporate environment. Under the guidance of an experienced crew, everyone will have a chance to set sail, trim sails and take the helm as we navigate the epic waters of Georgian Bay. Can choose a morning, afternoon or sunset sail. Bathroom and storage areas on board.

**Duration: 2 Hours**



# KILLARNEY CHANNEL PACKAGE

*Your group may take advantage of our Killarney Channel Corporate Day Meeting Package where we will take care of all your conference needs. We can easily accommodate all kinds of options for your group.*

## HOT BREAKFAST

Your guests will enjoy a hot breakfast in our dining area

## MID MORNING REFRESHMENT

Coffee, tea, assorted juices, house-made cookies

## TWO COURSE LUNCH OR BUFFET

Served in our dining area or as a working lunch (pending room selection)

## MID AFTERNOON REFRESHMENT

Coffee, tea, fruit, fresh pastries

## THREE COURSE DINNER

Appetizer of Soup or Salad

Choice of entrée

Dessert with coffee and tea service



# COMPLIMENTARY BREAKOUT MEETING VENUE

Complimentary Breakout Meeting Space Room for 20

Meeting room available from 8 AM – 5 PM

with complimentary screen, one flip-chart,

power bars, pads, pens and water.

*\*for bookings of 50 or more*

# COMPLIMENTARY USE OF FACILITIES

- Use of Non-Motorized Water/Beach Toys, Bikes, Paddleboards, Outdoor Pool and Sauna
- Complimentary use of Fitness Centre
- Complimentary high-speed wireless internet in common areas and Canada House



# KILLARNEY MOUNTAIN LODGE AND CONFERENCE CENTRE



For more information on meetings, groups,  
events and weddings, please contact us at  
**[meetings@killarney.com](mailto:meetings@killarney.com) or 1-800-461-1117**



[www.killarney.com](http://www.killarney.com)